

NOTE: I have added the images associated to the links in John's post to the end of this Acrobat file.

-Martin Wesley

Hi,

I would like to share with you the result of a rather primitive light exposure experiment that I have done with Piezotone SE ink and MIS FS ink on PhotoRag 308 paper.

The images you are about to see were printed on two different Epson 1160 printers, one with MIS FS ink the other with the PiezoTone SE ink; the SE printer was flushed as per IJM's instructions prior to cartridge installation. The Randall workflow was used because it produces a much darker D-Max than the Piezo driver; 2.00 compared to 1.77. The prints were taped to a climate controlled office wall in a uniformly lit area. The office has a large panel of windows leading to the outside and the walls and ceiling are painted white; it is quite a bright room, bright enough to not have to use the overhead lights at all. The prints were taped to the wall adjacent to the windows approximately two feet from them. At no time during the days of the exposure did the prints see any direct sunlight; only reflected light. The right side of each of the prints was covered with black opaque paper taken from a box of old photographic paper for the duration of the exposure. The prints were mounted from 8/15/02 - 9/4/02 or three weeks total. Since the test, the prints were kept in a dark drawer and scanned on 9/10/02 on a flatbed scanner. Both prints were scanned in RGB color with the same scanning parameters.

The Piezotone SE image is here:

<http://users.rcn.com/chervinsky/Photography/People/PiezoSE.jpg>

The MIS FS image is here:

<http://users.rcn.com/chervinsky/Photography/People/MIS.jpg>

The D-Max of the PiezoTone SE print went from 2.0 to 1.63 in the exposed area and stayed the same in the covered area. The D-Max of the MIS print went from 1.73 to 1.72 in the exposed area and stayed the same in the covered area. Densitometry measurements were done with a calibrated X-Rite 810 densitometer.

Subjective Assessment: I am greatly impressed with the general

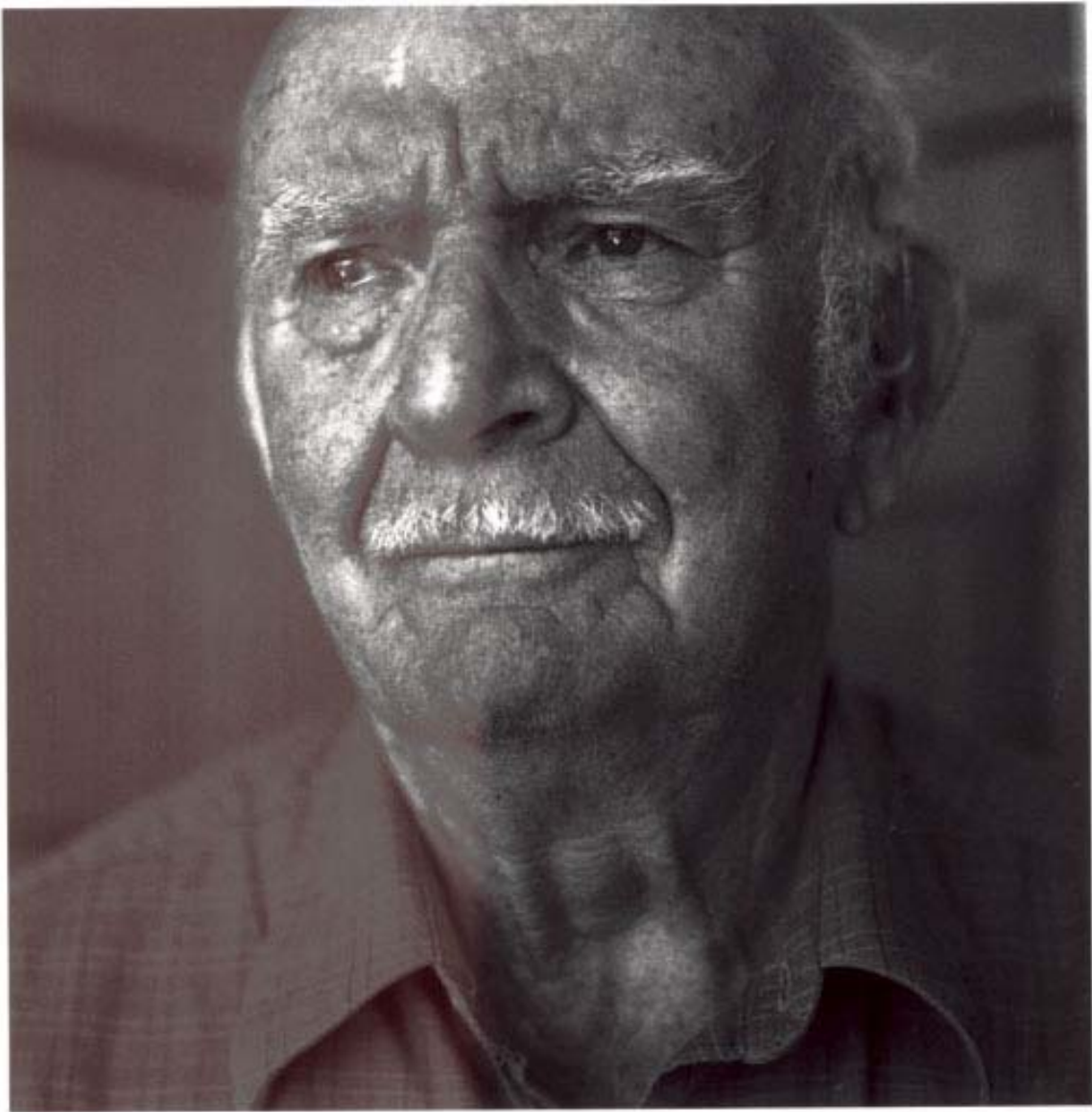
appearance of PiezoTone SE print as it comes out of the printer; the blacks are just spectacular, MUCH better than the MIS FS ink. I am also impressed with the inks overall neutrality. I am, however, quite disappointed with the inks lightfastness. Further, when the PiezoTone ink fades it tends to turn pink. As I mentioned earlier the office is bright but I do not believe that it could be three stops brighter than display conditions. I worry that after 6 months in display light that my prints will fade in a similar way.

I hope this has been helpful to all.

Thanks for your time.

-John Chervinsky

Selenium-PiezoTone Print on Photo Rag paper after 3 weeks of display



MIS-FS Print on Photo Rag paper after 3 weeks of display

