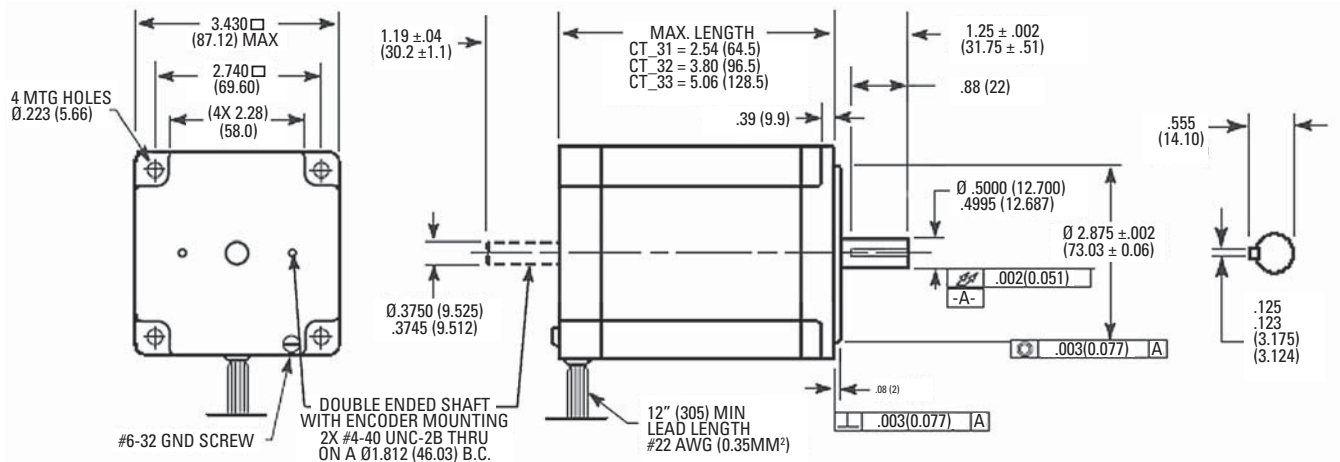


CTM3/CTP3-Size 34

- CTM Enhanced Series – Maximum Torque and Efficiency
- CTP High Torque Performance Series
- Captured front bearing – excellent for use with leadscrews
- High voltage insulation system
- RoHS Compliant
- Custom Motors



| | |
|---------------------------|----------------------------------|
| Phases | 2 |
| Full Steps per Revolution | 200 |
| Step Angle | 1.8° |
| Step Accuracy | ±3% |
| Operating Temperature | -20°C to ±40°C |
| Insulation Class | Class B, 130°C |
| Insulation Voltage Rating | 340 VDC |
| Insulation Resistance | 100 Megohms |
| Shaft Load | (20,000 hrs at 1,500 rpm) |
| Radial | 65 lbs. (29 kg) at shaft center |
| Axial | 100 lbs. (45 kg) both directions |



| Series | Motor Torque Motor Mounted | | | | Detent Torque | | Thermal Resistance Mounted °C/watt | Rotor Inertia | | Net Weight | |
|--------|-------------------------------|------|----------|------|---------------|------|--|----------------------|--------------------|------------|-----|
| | Bipolar | | Unipolar | | Typical | | | oz-in-S ² | kg-cm ² | lbs | kg |
| | oz-in | N-m | oz-in | N-m | oz-in | N-m | | | | | |
| CTM31 | 690 | 4.9 | 550 | 3.9 | 30 | 0.21 | 2.02 | 0.0185 | 1.31 | 4.1 | 1.9 |
| CTM32 | 1350 | 9.5 | 1070 | 7.6 | 41 | 0.29 | 1.55 | 0.0370 | 2.61 | 6.6 | 3.0 |
| CTM33 | 1930 | 13.6 | 1500 | 10.6 | 52 | 0.37 | 1.36 | 0.0555 | 3.92 | 9.3 | 4.2 |
| CTP31 | 565 | 4.0 | 460 | 3.3 | 22 | 0.16 | 2.02 | 0.0185 | 1.31 | 4.0 | 1.8 |
| CTP32 | 1100 | 7.8 | 890 | 6.3 | 30 | 0.21 | 1.55 | 0.0370 | 2.61 | 6.5 | 3.0 |
| CTP33 | 1570 | 11 | 1250 | 8.8 | 38 | 0.27 | 1.36 | 0.0555 | 3.92 | 9.1 | 4.1 |