



BCR 2000 to Ableton LIVE



Mackie Control Emulation + BCR2k Native Device controller
Version 5.0a – revised manual 12.19.08

Table of Contents

Introduction	2
What is this for?	2
* New features – Version 5.0a	3
Installation	3
PC –	3
OSX –	3
Ableton Live – Setup	4
No Value scaling	4
Example routing – Closed Loop.....	4
Start up order is important	4
Usage	4
Rotary switches	5
Control descriptions (for preset #22)	6
Mute/solo/vselect/clip_fires	6
Vpots (preset #22).....	7
Using LCD emulation	9
Dpots – new this release – Thanks Stefan!.....	10
Faders (preset #22).....	10
Navigation and control.....	10
View – rotary switches.....	11
Other controls.....	11
Don't forget the 2 foot switches.....	11
*Preset arrow keys	11
Why 2 presets?.....	11
Tips for this preset	12
Tips for Bcmanager	12
Final thoughts	13

Introduction

This bcr2000 preset (sysex file) was created by me and stefan_soundstudies (from the bc2000 yahoo group) with ideas from others Pete, there, using [Bcmanager](#) and [Bcreditor](#).

It is based on extensive work from [Namihei](#) and others at the [Ableton Live forum](#). Many thanks to all their hard work.

What is this for?

This preset will turn your cheap BCR2000 into a really nice, *almost*, full Mackie Control Emulation for controlling Ableton Live. In addition you get the Ableton Live native device control of the BCR2000 and some very useful Live performance tools (clip_fires + up/down cursors).

It *will* increase you productivity significantly and get your hands off the mouse/keyboard.

Try it, you have nothing to loose, except 1 preset slot on the BCR2000. Functions and usage are explained below.

* **New features – Version 5.0a**

This preset will **overwrite preset #21 and #22** – Back up your presets *before* playing with this. You have been **warned!**

- *Two presets included*
 - *# 21 has faders on the top row of encoders and leds working*
 - *# 22 has vpots on the top row of encoders leds not working (see layout images further down)*
 - *Which you like better is up to you!*
- *8 Device pots (dpots) – Great work Stefan_soundstudies from yahoo.*
 - *8 new knobs that are the native Ableton Live support for the BCR2000.*
 - *Used to control devices like instruments and fx.*
 - *<dev.bank> are controls to select the next set of 8 device controls. See Stefan's directions in his .pdf attached. They layout is slightly different than Stefan's dpots .pdf shows.*
- *Record Arms removed, sorry.*
- *Clip_fires – peter_resolent's idea, my implementation.*
 - *8 new knobs*
 - *They control cursor up/down for tracks 1-8 or 9-16 etc depending on <bank>*
 - *8 push encoders to fire highlighted clip. 1-8 or 9-16 ... etc like above.*

Installation

Send the sysex file to the BCR2000.

- BCR2000 – Mode U1, is what I use, check your bcr manual for help on that.
- This file will **overwrite** preset # 21 + 22 on the BCR2000. Make sure you back up all your bcr2000 presets before sending this file. *You have been warned twice!*
- Send “Bcr_Live_ver5_0store21+22.syx” to the BCR2000 using your favorite sysex librarian or my favorite editor BCmanager. When you send the file, you will see the BCR's lights dance.
- You might have to hit the preset button (bcr2000 button) up or down 1 then come back use the preset

PC –

- Midiox, is an awesome free ware program with many other functions. You will need midiyoke, available at the same place, *if you plan to use huskervu with it.*
- You can also use, and I strongly recommend, Bcmanager, see link above, to transfer the file.

OSX –

I don't run a mac, good luck. Here are some sysex options, I have not tested any of them.

- SysEx Librarian

- <http://opuslocus.com/forums/viewtopi...fa614bfeb0bbe8>
- [Debehinger 1.0](#)

Ableton Live – Setup

Set up for Live is pretty straightforward.

- Preferences>midi sync – control surface 1 drop down to MackieControl
 - Input – whatever the midi port is called in your system (BCR2000(1) on mine) or however midi data is getting from the bcr to Live.
 - Output, what ever midi port is back to the BCR2000.
 - The output port is important for visual feedback on the BCR2000.
 - If you are using Huskervu (why wouldn't you) follow the instructions on that website. (See screen shot below)
 - If on a mac, the [LC Xview](#) looks good, you will still need some way to route midi back into the BCR2000.
 - Scroll down the midi ports and open up REMOTE for both input and output on BCR2000. UPDATE I am not certain you need this step at all.
 - **** **For new dpots to work you must set up another control surface. See Stefan's .pdf for screen shot of the bcr2000 control surface set up.**

No Value scaling

Value Scaling should *not* be used, if you route control surface midi output back to the BCR2000. If you do, you will get fader jumps.

Example routing – Closed Loop

BCR2000>AbletonLive>(virtual port)Huservu or LCXview>BCR2000. You should have a Closed loop.

Start up order *is* important

Always boot the BCR2000 1st, then any lcd emulation, then Live. Otherwise, it won't have the BCR2000 ports listed. Set up ports as you need. Image below shows that I send the output to the midiyoke3 (I set that as the input on Huskervu).

Usage

View my [movie](#) for a demonstration of what this preset does. The layout of controls in version 5.0 is not the same as in the movie. *Sorry, and no, I am not going to film it again.* The following will describe controls.

Try this – With live open and setup.

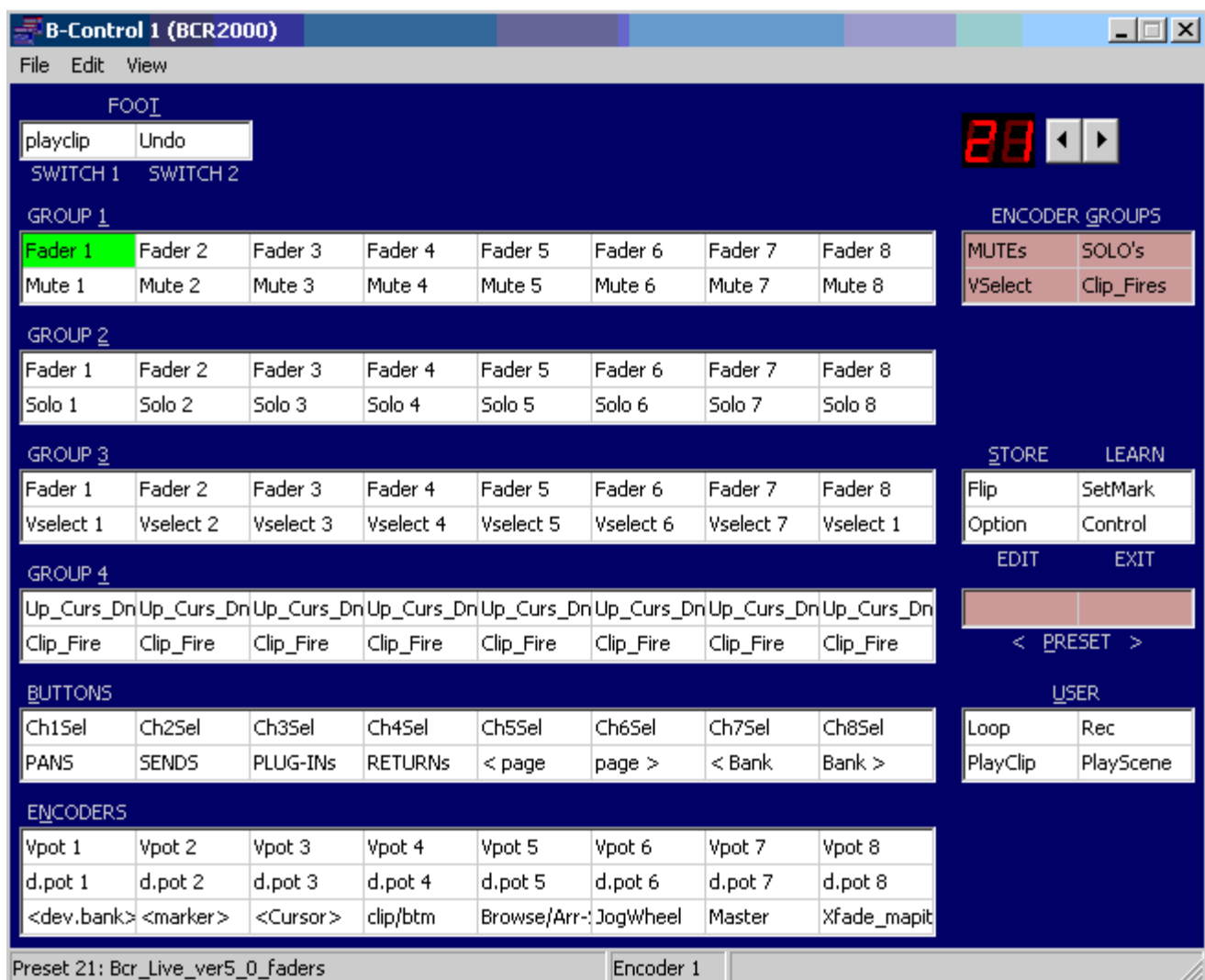
- Go to *preset 2* on your BCR,
- twist the third row up from bottom ([see image below](#)) **vpot1** (leftmost knob, third row up) you should see the *lights next to the KEY button in Live at the top right*, light up showing data exchange. If not, check your midi routing and the Live setup for mackie control .You should also see the pan knob for track 1 in Live follow **vpot1**.

- **Vpot2** will control track 2 pan etc... * Note - *the vpot led's don't work correctly.*
- Try, **fader1** and you should see the fader on track 1 in Live, follow. You might also note the the fader leds on the BCR2000 follow the position in Live (and they remember when you bank down to 9-16 and back!).

Rotary switches

These were new in ver. 4.1 – they use the rotary knobs as dual direction switches. Their behavior is a little strange at first.

- Look at the <cursor> control on the 1st row up 3rd knob from the left.
- If you watch in Live as you turn the knob clockwise. The cursor will move right.
- Turn the knob counterclockwise and the cursor will move right.
- The view rotary switches act a little different, try them. The behavior is a bit hard to describe.



Screen shot of **preset 21** with faders and working leds on top.



Screen shot: preset #22 Vpots non working leds on top (descriptions that follow based on this layout)

Control descriptions (for preset #22)

Mute/solo/vselect/clip_fires

(encoder group buttons top right) Look at the screen shot again of the layout of this preset to make sense of this.

- **Each of the 8 Vpots has can be pushed, as a button function.**
- If **encoder group #1** button (MUTES) is active then these buttons become **mutes** for each track 1-8 (unless you have more tracks and use the bank buttons from above they will follow).
- **Solo hit the solo button** = faders pushes are now solos. **V-select** work the same way.
- If you want to **mute** multiple tracks or **solo** multiple tracks you need to press and hold **CONTROL** while pressing the faders you want armed or soloed.
- **Clip_Fires button** - This control will turn the encoders into **cursor up/down** and clip fires by pushing the encoder. Clip stop with Option + a clip fire.

- So if you push this button, vspots will not be available!
- Also – track arms have been removed, you will have to find another way to do that or use a different preset.

Vpots (preset #22)

Using this preset all about the **VPOTS** and how they control different things depending on track selected and (pan, send, plugin and return buttons). Experiment, you won't be disappointed!

Vpots are located on the top row of knobs. These are the **main** controls for the emulation. Their functions *change*, based on other *buttons*. (Pans, Sends, Plug-ins, Returns and Flip)

- **Pans** – each vpot controls pan by track. Vpot1 = pan on track 1.
 - If more than 8 tracks – **Bank <+> (rotary switch)**.
 - **Banks** – are in sets of 8, 1-8, 9-16, etc..
 - No limit.
 - Clockwise turn of the bank knob will go out, 9-16 then 17-24... etc.
 - Counterclockwise turn of the bank rotary switch (knob) will come back, 17-24 then 9-16, then 1-8. Visual feedback from LCD emulation is necessary to know where you are.
- **Sends** - each vpot controls send by track, as with pan.
 - The number of sends is directly related to the number of return tracks in the project. *Note – if you have no return tracks there are no sends.
 - **Push Ch1SEL** button (see chart above, top row of buttons) = Live will highlight track1,
 - Next hit the **SEND** button, now –
 - **Vpot 1** becomes send 1 level,
 - **Vpot 2** becomes send 2 level (depending on how many return tracks you have, if you have 5 then there will be 5 send knobs each corresponding to a Vpot.
 - Now hit **Ch2SEL** button = Live will highlight track2.
 - **Vpot 1** becomes send 1 for track 2 and
 - **Vpot 2** becomes send 2 for track 2... etc. This really works.
- **Plug-in's** = Set the vspots to control plugin settings! Some sort of LCD emulation is a must, for this to be effective. *Note – *controlling plugins takes some time to master*.
 - *Try this*, open a project of yours with some native Live effects or a vst on a track.1.
 - Press **ChSel1** (ber button press) track 1, or use cursors (described below) or computer cursors to highlight track 1.
 - Press **PLUG-IN's** (LCD emulation will show plugins for track 1)
 - Then press the **v-select button** (encoder group button #4, located top right, 1 down)
 - Push down on the top row (**fader1/push**) = chooses the first plugin,

- if you had more than one you could use (**fader2 push**) to select the second plugin... etc
- **Vpot** knobs 1-8 will, now, control that selected plugins first 8 parameters.
- Again without some sort of LCD – you are flying blind. Huskervu works great with this.
- You will get titles and values of parameters.



Screen shot of Live with native plugin visible on Huskervu.

- If the selected plugin has more than 8 parameters –
 - **Page > button led will light up. (that is cool!)**
 - Use the **Page <, >** buttons to navigate thru the pages of parameters, the vpot will control the parameters visible on the LCD emu.
 - If there are only 8 parameters – the **Page >** button led will NOT



Screen shot Huskervu with Live + a vst plugin showing parameters.

light.

- That... is really nice!
- You can change back to sends or pans just by hitting those buttons.
- **Returns** - control the return tracks and are a special case for the entire emulation.
 - Hit **Returns** -
 - Now **faders** control the volume of each **return** track (**Fader 1** will control **return** track **A**)
 - **Vpots** control **pan** or **send** or **plugins** on return tracks!
 - Mutes/solo/will also work on return tracks.
 - LCD emulation is important here too!
 - Hit **Returns** again to get out of those controls.

Using LCD emulation

Huskervu – or some other LCD emulation is necessary for successful use of this preset. How many times shall I say it? The visual feedback of what you are controlling with text and value displayed makes it easy to work with. See the screen shot above. *Note - Some vsts have labels that show up in Huskevuvu, some do not. Crystal (great free synth) only shows “param#1, param#2 etc... I think racks show something like that too, bummer.

However, Stefan_soundstudies has created a very nice lcd emulation that incorporates the dpots and the mackie emulation. I love it and it works great!

I have tried to email him for about a month, however, I have been unable to reach him, I cannot release his beta without his permission, so I won't. Email him, from the bcyahoo group to help get him back.



Stefan's MCL – Awesome Mackie + dpot (SL emulation) display program.

This shot shows a mackie LCD display above the dpot display.

What are dpots? Read on.

Dpots – new this release – Thanks Stefan!

Dpots are *device control* knobs – they are the native support for the bcr2k in Ableton Live. Extra thanks to Stefan_soundstudies! These are really cool! They are much easier to use for device control than the vpots from the mackie emulation, however the vpots are still very useful.

- *See included .pdf for Stefan's directions on how to set the dpots up.*
- Use these to control Live effects and instruments as well as vsts.
- Click on device, hand will show up that you are now controlling that device.
- The 8 dpots now control that device, there is a d_bank control as well that works the same as paging for vpot and vsts (see above).

Faders (preset #22)

2nd row from the top row of knobs = control the level of the tracks – 1-8, 9-16, 17-24 ... etc (depending on bank button status).

- **Flip** – When flip has been pushed the **vpots** and **faders** switch places
- Be aware of that if **faders** are not doing what you expect.
- **Master** – the master fader is located on the bottom row of knobs next to Jog. Master only controls the master level, never, anything else.

Navigation and control

This section is about using the **PlayClip**, **PlayScene**, **Cursors**, **Marker + Markers** <> and **Jog**.

- **PlayClip** , **PlayScene**, **+OPTION** -
 - **PlayClip**=play what ever clip is highlighted, hold **OPTION** + **PlayClip**=stop what ever clip is highlighted.
 - **PlayScene**= play highlighted scene, **OPTION+PlayScene**=stop the scene.
- **These will be removed because they are on the clip fire section ...Cursor (<,> down, up) commands have been added as rotary switches. Bottom row 2nd from left (see image below) Now I can't remember which does what...**
 - **Cursor** <,> Turn knob left (counterclockwise) = cursor moves left and will continue moving left. Turn same knob right (cw) = cursor moves right.* *NOTE - This behavior (one control one direction turn, a different control for the other direction) is common for all the new rotary switches (bottom row up to jog and includes marker<>.*
 - Same with up down. Now, if I knew which was what...
- **SetMark** – this button sets marker points.
 - **Marker** <> - rotary switch, bottom row far right -
 - **Marker** < - will go to the previous marker.
 - **Marker** > - will go to the next marker.

- **JOG wheel** in *session view*.
 - **JOG wheel** = up and down clip list like the cursors above.
 - **JOG** in *arrange view* is really a **JOG** and it is awesome
- Transports at the bottom right set of buttons is pretty self-explanatory. **Note – no rewind or ff, sorry, they need momentary buttons and won't work well with the rotary switches... ran out of room.*

View – rotary switches

Allows control of the different ways to view what you see on screen with Live.

- Clipfx/Bottom view –
 - ccw = toggles clip/fx view.
 - cw = toggles bottom section in live
- Browse/Arrange-session-
 - ccw = toggles browser view
 - cw = toggles arrange/session view.

Other controls

Some controls have not been mentioned up to this point

- Option button – some functions already mentioned above. Other functions not known at this time...
- Control button – Press and hold control to multiple arm or multiple solo tracks. Other functions not known at this time.
- Xfade_mapit is not part of the mackie system, it is just a controller that you can map to your xfader like you would normally map a controller.

Don't forget the 2 foot switches

- **#1 play active clip** – if the track is armed this will begin recording so hands free trigger. This is nice for guitar or bass.
- **#2 undo**. You can use Jog or cursors to go to next clip or **Track buttons** to go to other tracks. Almost like have the fcb1010, but not quite, only two foot switches.. alas. Also, foot switch info does *not* show up on Huskervu.

***Preset arrow keys**

These controls are not altered so, you can switch quickly (almost instantly), between BCR2K presets. You can't do that with a UC33e!

Why 2 presets?

- Preset 21 has faders and leds working on the top row of encoders.
- Preset 22 has vpots and non working leds on top row of encoders.

I could not decide which I liked better.

I like faders on top with leds except if I am firing clips then I want faders down on the next row, so I can quickly control volume. I suppose I could use flip, however, I never tested that with this preset, it

might move the cursor up/downs... so vspots on top were my choice...
However, for mixing those leds sure are nice!
You decide or use both for whichever purpose you like.

Tips for this preset

You don't have to use it, however, I think you will like it.

- Play with it.
 - Open some project you are not worried about, to get used to using this preset.
 - Maybe, print out the above image to look at
 - Make labels so you can just look and go. (I use artists low tack tape and write names on that tape)
 - Bcmanager, will print labels!
 - I have not done so, so I can't tell you how well it works.
- RTFM (oh wait, if you got here you already have) Nice work!
- Make sure you understand about the <BANK> controls.
 - Again, some sort of LCD emulation will help you know where you are, visually.
 - Bank will affect faders, vspots, mutes/solos/arms/vselects.
- Remember, if you move or delete a Live track all controls will remap appropriately. (You can't do that with the 1 template in Live 6.01. I think 7 changed that... not sure.)
- If you don't like it you can always go back to just having faders, the stock "all controls" for BCR2000 and LIVE, and plug in controls by switching presets. One button press and you are back to the old way.
- You can still change presets on the fly like if you are working with a softsynth or some vst you have mapped. Don't forget that the **plugins** command does work with vsts.
- If you want to change the layout, just use bcmanager to work the file the way you want, then save and send it back to the bcr2000 and you have customized it yourself. It is pretty easy with bcmanager.

Tips for Bcmanager

- Use it, you will love it.
- You can move controls where you like with bcmanager (see link at the top of the page). I strongly encourage you to download that program to make this controller do what you want. You can copy and paste, set ranges, do all kinds of fun things. I guess you know, I like bcmanager.
 - Beware tho, when you first use it you may accidentally overwrite all your presets. I did this. Back up before you begin.
- The file included here is 2 presets.
 - Get used to bcmanager for a little bit before sending this file.
 - You can dump your bcr to bcmanager and save it. Bcmanager will request the dump, no need to touch the bcr besides turning it on and routing midi.
 - You could then open the .syx file included here with bcmanager, highlight just that preset and click send from the preset window, **not send all to bcr**, just that one preset.
 - Remember it will overwrite preset #21 and 22.

Final thoughts

If you are opening this, then you have a BCR2000.

I cannot stress how flexible this controller is and the how easy it is to edit presets using bcmanager.

UPDATE -

Users on the bcyahoo group keep coming up with new uses of this great controller.

I have, in fact, also created a sysex editor for an old synth that works great. No more nested menus to adjust new patches for my old VFX.

If you have a pc then you must go to the [bc2000](#) yahoo group. Mark and Royce have created some excellent editors for the pc. No more, buggy java editor from the company. The wealth of information on the controller and it's flexibility is well documented by Mark and Royce. Go join and learn.

Best of luck.

genmce@yahoo.com