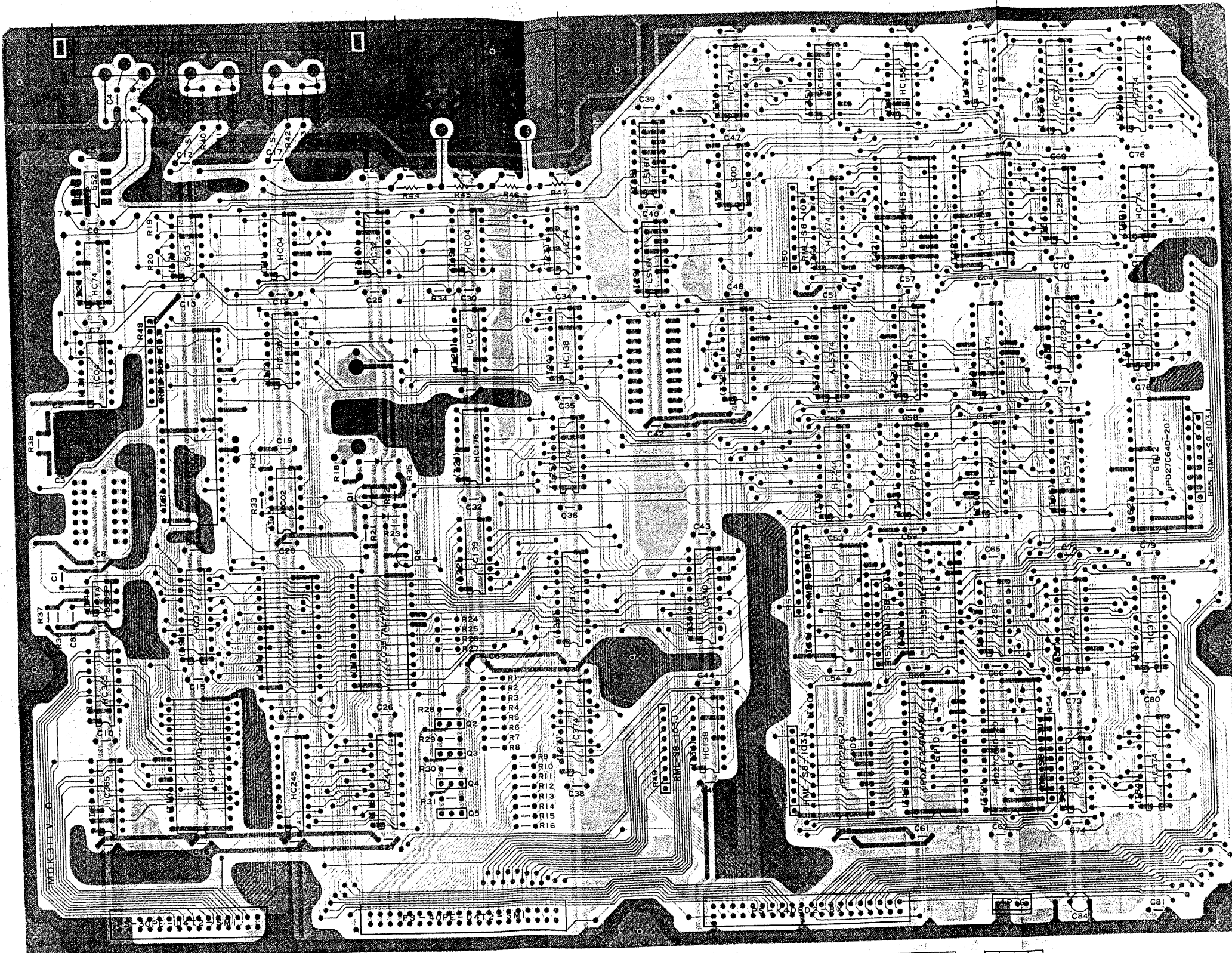
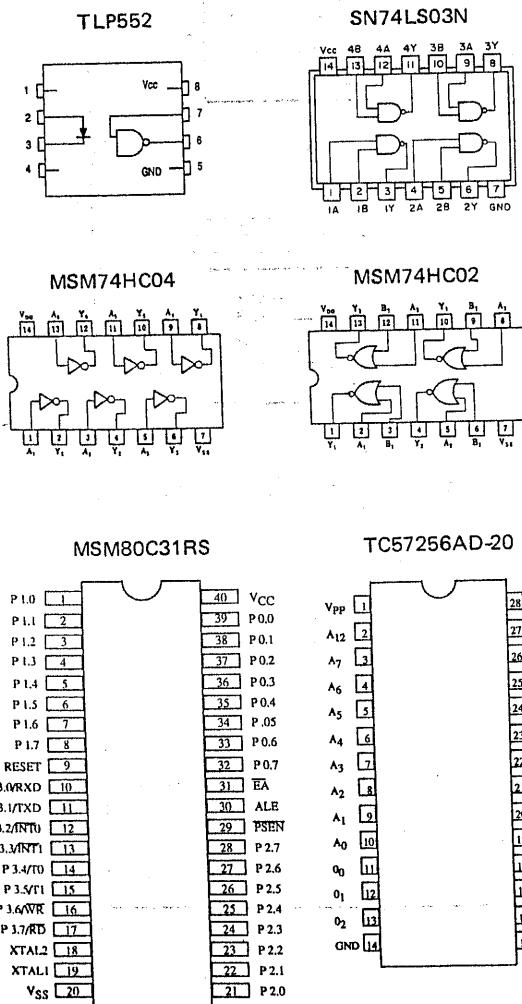


6. [CPU-09] PRINTED CIRCUIT BOARD

IC No.	Name	Code No.	Abstract
11	TLP552	802361	Photo Coupler
12, 23, 47	MSM74HC74	802834	Dual D-Type Flip-Flop with Preset and Clear
13, 11, 19	MSM74HC04	802832	Hex. Inverter
14	TA9505P	802937	Supply Voltage Supervisor
15, 6	MSM74HC02	802936	Hex. 3-State Bus Buffer (Inverting)
17	SN74LS03N	706951	Quadruple 2-Input Positive NAND Gates
18	80C31	802824	CPU
19	MSM74HC373	802842	Octal D-Type Latch with 3-State Output (Non-Inverting)
110	6P08EPROM27C256-20	909375	32768x8 UV Erasable and Electrically Programmable ROM
112, 24, 34	MSM74HC138	802932	3-To-8 Line Decoder
113, 20	MSM74HC02	802931	Quad 2-Input NOR Gate
114, 17, 39, 42, 45, 48	LC3517AL-15	802938	2K x 8 Static RAM
115	MSM74HC245	802935	Octal 3-State Bus Transceiver
116	MSM74HC32	802833	Quad 2-Input OR Gate
118, 38, 44, 50	MSM74HC244	802838	Octal 3-State Bus Buffer
121	MSM74HC175	802933	Quad D-Type Flip-Flop with Clear
122	MSM74HC139	802835	Dual 2-To-4 Line Decoder
125, 30, 60, 61	MSM74HC174	802837	Hex. D-Type Flip-Flop
126, 27, 36, 49, 53, 56, 57, 59, 63, 64	MSM74HC374	802843	Octal D-Type Flip-Flop with 3-State
128, 29	74LS161	800756	Synchronous 4-Bit Counters Binary
131	74LS00	800720	Quadruple 2-Input Positive NAND Gates
132	5P42A IFL CK2605	907531	Programmable Fuse Logic
133	MSM74HC240	802934	Inverting Octal 3-State Bus Buffer
135, 41	MSM74HC158	802836	Quad 2-Channel Multiplexer (Inverting)
137	74ALS374	802353	Octal D-Type Flip-Flop
140	6P09EPROM27C256-20	909380	
143	5P411FL CK2605	907525	
146	6P10 EPROM 27C256-20	909385	
151, 54, 55, 58	MSM74HC253	802840	4-Bit Binary Full Adder
152	6P11EPROM27C64-20	909390	8K x 8 EP ROM
162	6P12EPROM27C64-20	909395	

[Transistor]		
Q1	2SA564R	708102
Q2~5	2SA874R	802362
Q6	2SC331T	902508
[Diode]		
D1	DSK-10B	802998
D2	MA-700	802364
D3	LT8001P	802940



29	D G	27	D G	25	C C E	23	C D 3	21	C D 4	19	C D 5	17	C D 6	15	C D 7	13	C A 3	11	C A 10	9	C A 10	7	C A 8	5	C A 7	3	+5D
30	D G	28	C C E	26	C D 2	24	C D 1	22	C D 0	20	C A 0	18	C A 1	16	C A 2	14	C A 4	12	C A 5	10	C A 6	8	C A 7	6	C A 8	4	+5D

39	L E D 0	37	L E D 1	35	L E D 2	33	L E D 3	31	S A 7	29	S A 6	27	S A 5	25	S A 4	23	S A 3	21	S A 2	19	S A 1	17	S A 0	15	P D 6	13	P D 4	11	P D 2	9	P D 1	7	P A 6	5	P A 4	3	P A 2	1	P A 0
40	L E D 0	38	L E D 1	36	L E D 2	34	L E D 3	32	S A 7	30	S A 6	28	S A 5	26	S A 4	24	S A 3	22	S A 2	20	S A 1	18	S A 0	16	P D 7	14	P D 5	12	P D 3	10	P D 0	8	P A 7	6	P A 5	4	P A 3	2	P A 1

39	R E L Y	37	I N H 1	35	S E L C	33	S E L A	31	L L	29	D D 6	27	D D 5	25	D D 4	23	D D 3	21	D D 2	19	S I N H	17	S I N A	15	S I N B	13	S I N C	11	S I N D	9	S I N E	7	S I N F	5	S I N G	3	S I N H	1	S I N I
40	R E L Y	38	I N H 1	36	S E L C	34	S E L A	32	L L	30	D D 6	28	D D 5	26	D D 4	24	D D 3	22	D D 2	20	S I N H	18	S I N A	16	S I N B	14	S I N C	12	S I N D	10	S I N E	8	S I N F	6	S I N G	4	S I N H	2	S I N I

4	D G	3	D G	2	D G	1	+5D
SW-61/PS-4							

